



Removal

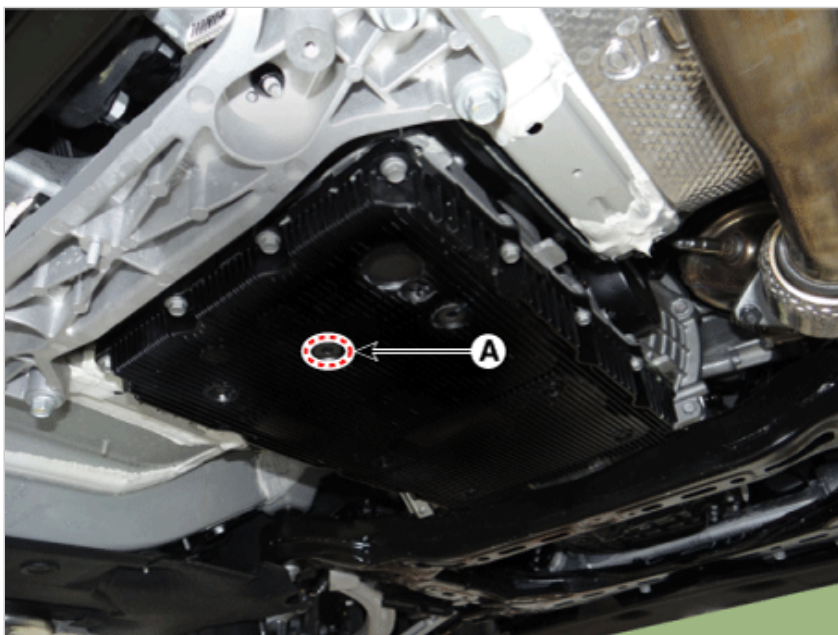
NOTICE

- Maintain clean condition so that foreign substance does not get into the automatic transmission.
- Use a coated apron, latex gloves, and stainless tray to prevent foreign substance from getting into the transmission.

1. Remove the under cover.
(Refer to Engine Mechanical System - "Engine Room Under Cover").
2. Remove the ATF drain plug (A), allow the fluid to drain out and then reinstall the drain plug.

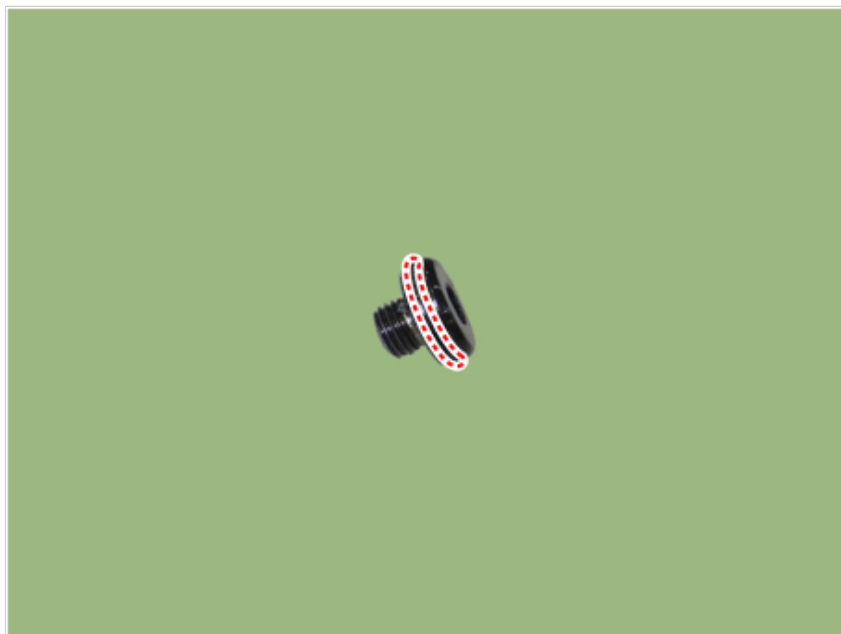
Tightening torque :

22.6 - 24.5 N·m (2.3 - 2.5 kgf·m, 16.6 - 18.1 lb·ft)

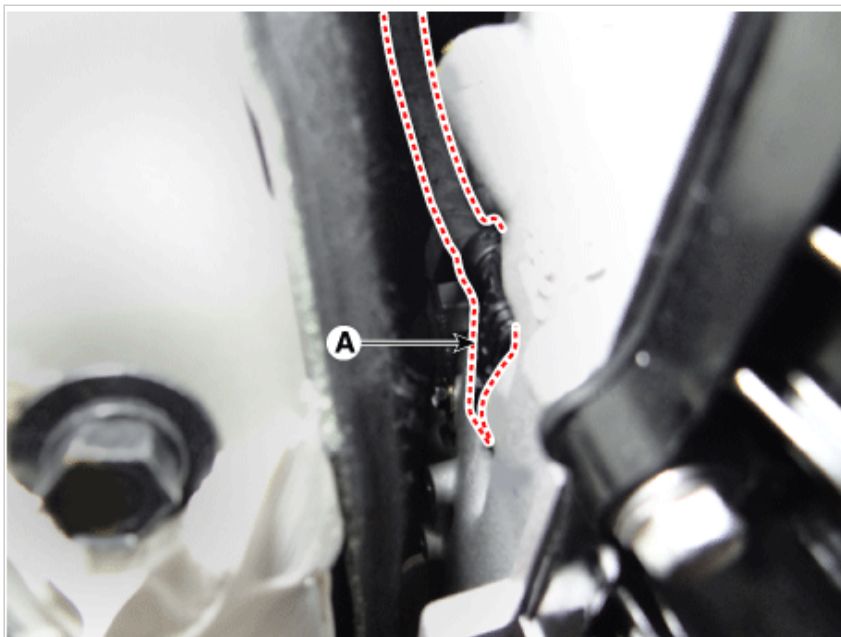


NOTICE

- ATF can be reused. Collect it in a clean beaker.
- The existing ATF drain plug O-ring must be replaced with a new one. (Do not reuse it.)



3. Disconnect the main connector (A).

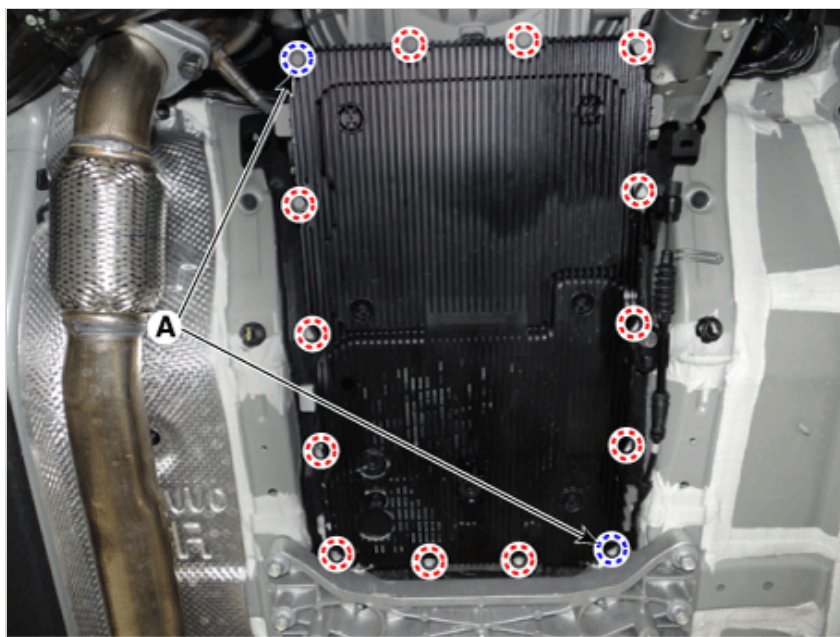


4. Remove the valve body cover.

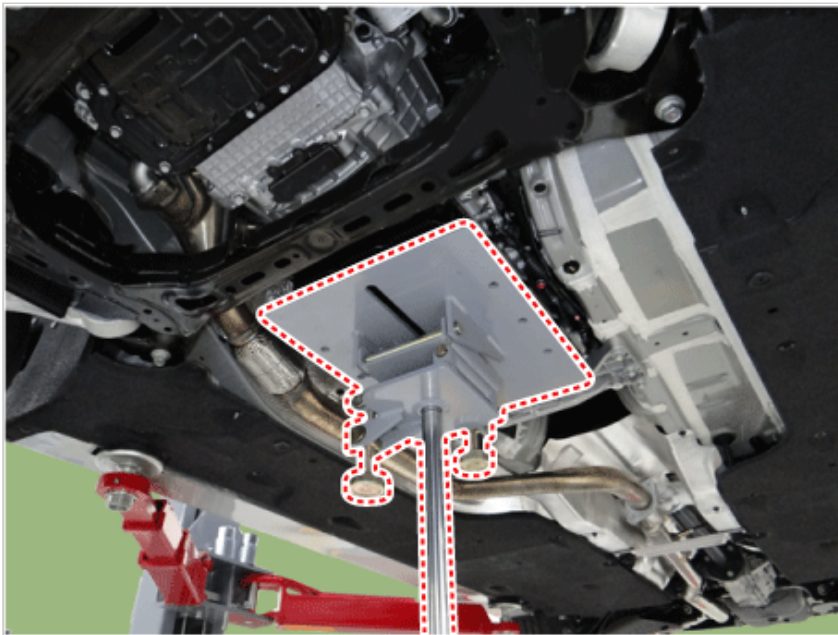
(1) Loosen the all valve body mounting bolts except for the bolts (A) in the corner.

Tightening torque :

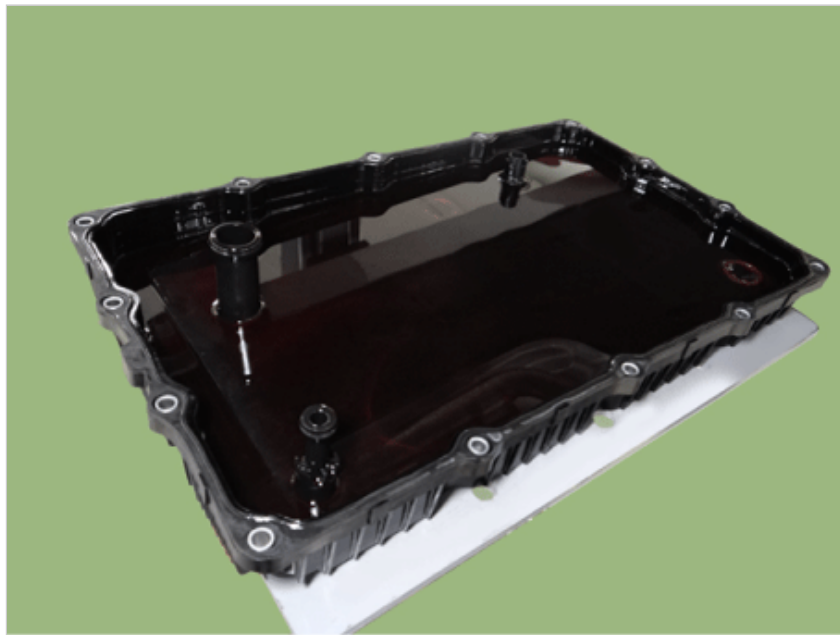
13.7 - 15.7 N·m (1.4 - 1.6 kgf·m, 10.1 - 11.6 lb·ft)



(2) Loosen the two bolts (A) in the corner after supporting the valve body cover on a jack and then remove the valve body cover by lowering the jack slowly.

**NOTICE**

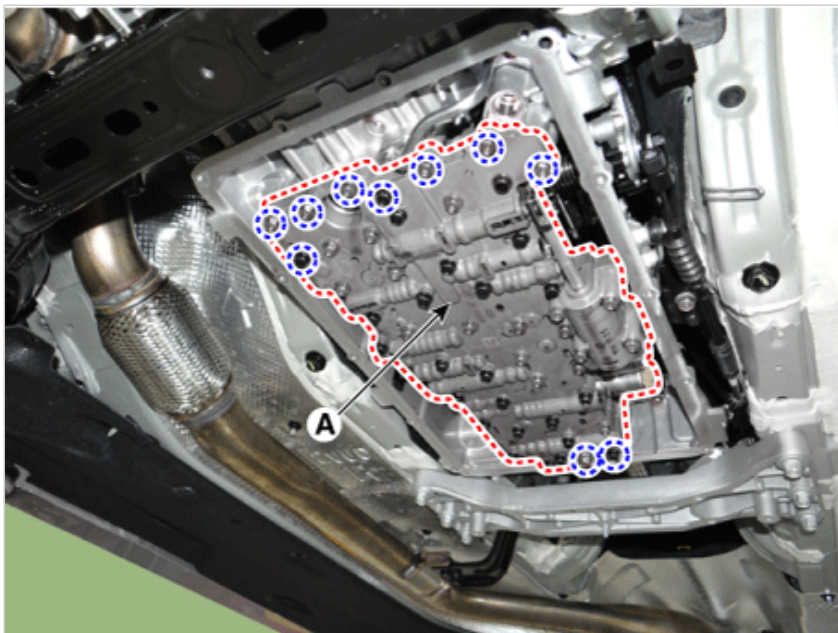
Be careful when removing the valve body cover because the remaining ATF remains in the valve body cover.



5. Remove the valve body assembly (A) after loosening the bolts.

Tightening torque :

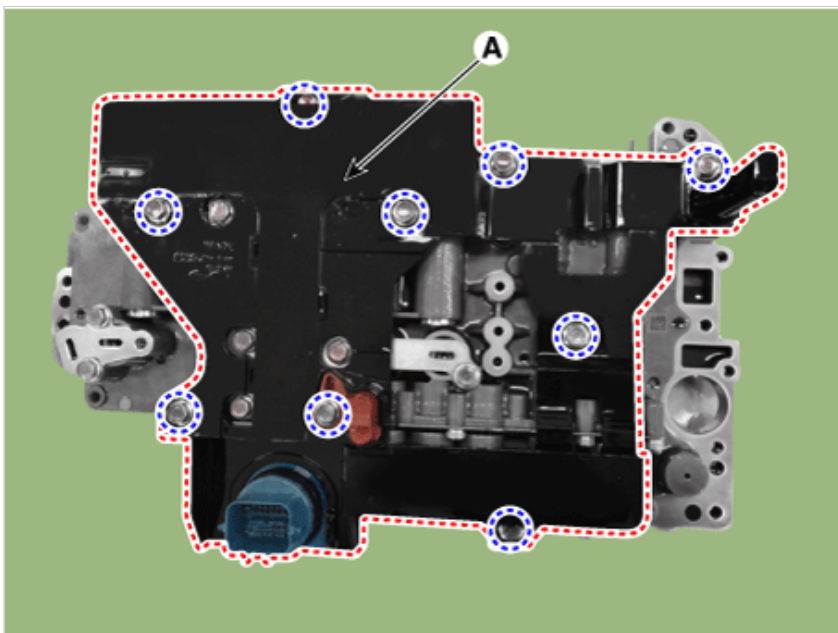
9.8 - 11.8 N·m (1.0 - 1.2 kgf·m, 7.2 - 8.7 lb·ft)



6. Remove the E-module (A) after loosening the bolts.

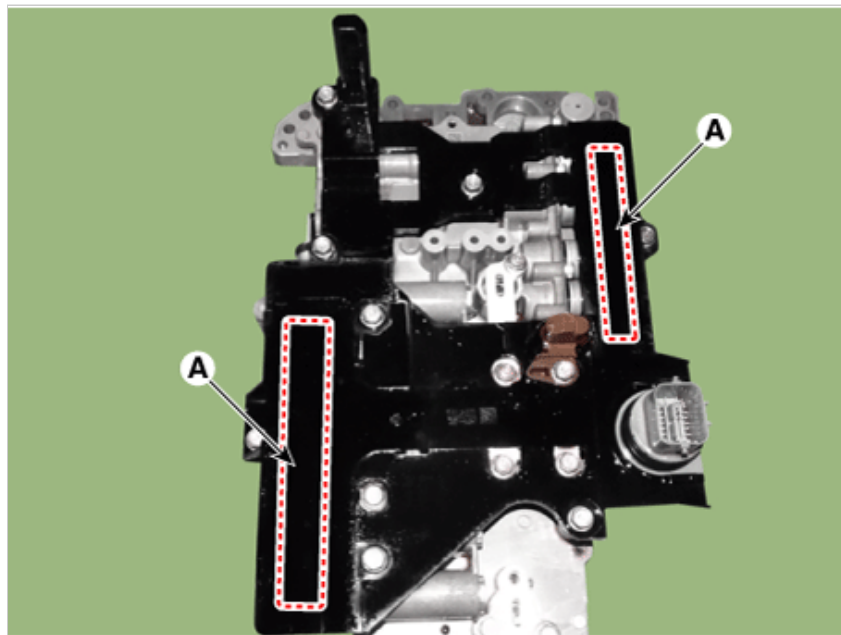
Tightening torque :

9.8 - 11.8 N·m (1.0 - 1.2 kgf·m, 7.2 - 8.7 lb·ft)



NOTICE

When installing, after mounting the E-module, lightly tap the connector part (A) to insert the connector certainly and then tighten the bolts.

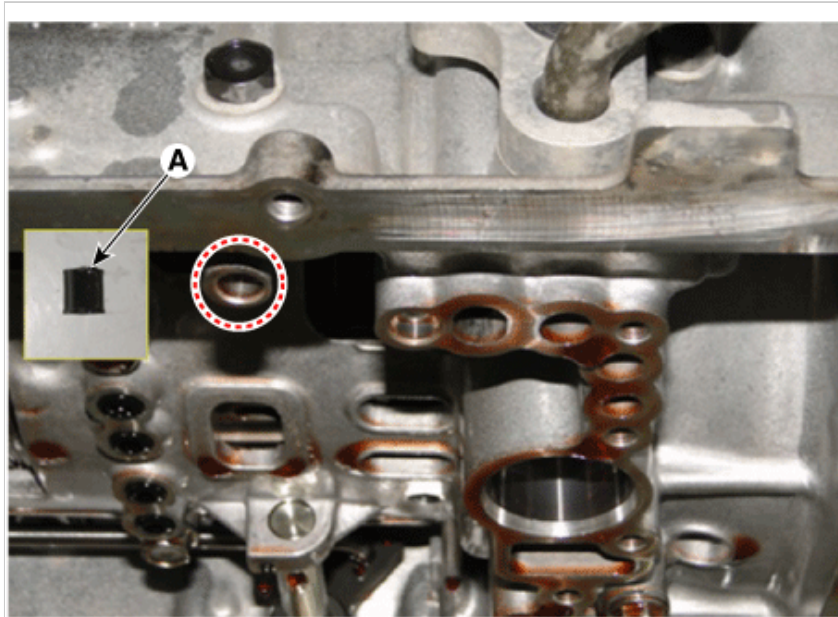


Installation

1. Install in the reverse order of removal.

NOTICE

- Check if the pipe (A) is inserted on the marked area before mounting the valve body assembly.



2. Refill the automatic transmission with fluid.
(Refer to Hydraulic System - "Fluid")